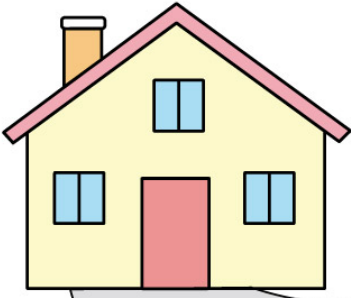
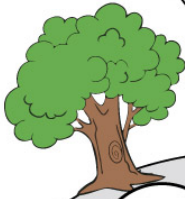


MISSING NUMBERS

Find and write the missing numbers of the series.

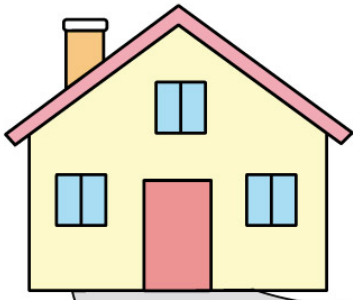


A winding grey path with circular holes containing numbers. The path starts at a house and ends at a boy holding a flower. The numbers in the path are: 1, 4, 7, 10, 14, 17, 20, 21, 24, 28, 31, 37, 40.



MISSING NUMBERS

Answers



1 2 3 4 5 6 7 8 9 10 11 12 13 14 15 16 17 18 19 20 21 22 23 24 25 26 27 28 29 30 31 32 33 34 35 36 37 38 39 40

