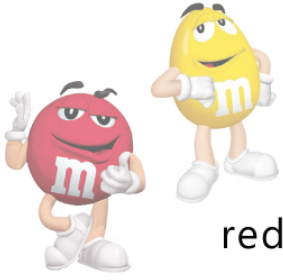


Name :



M&M's Ratio Worksheet



Answer the following questions about the red, blue, yellow, and green M&M's kept in a bag.

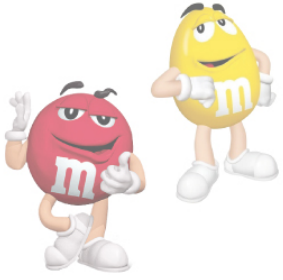
1. If the ratio of red to blue M&M's is $2:5$ and there are 20 red M&M's, how many blue M&M's are there?

2. If the ratio of green to blue M&M's is $1:3$ and there are 12 green M&M's, how many blue M&M's are there?

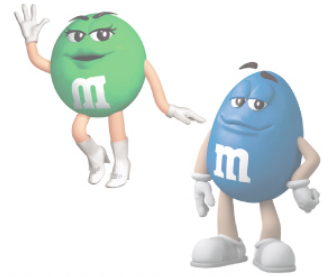
3. If the ratio of yellow to green M&M's is $1:1$ and there are 10 yellow M&M's, how many green M&M's are there?

4. If the ratio of green to red M&M's is $1:0.5$, and there are 18 green M&M's, how many red M&M's are there?

Name :



M&M's Ratio Worksheet



Answers

1. If the ratio of red to blue M&M's is 2:5 and there are 20 red M&M's, how many blue M&M's are there?

50

2. If the ratio of green to blue M&M's is 1:3 and there are 12 green M&M's, how many blue M&M's are there?

36

3. If the ratio of yellow to green M&M's is 1:1 and there are 10 yellow M&M's, how many green M&M's are there?

10

4. If the ratio of green to red M&M's is 1:0.5, and there are 18 green M&M's, how many red M&M's are there?

9